



## About Experts

### Dr. Ranadip Roy

*Technology expert with a deep understanding of AI applications in education.*

### Mr. Siddhartha Chakraborty

*Specialization in the application of AI in educational settings.*

### Course is For

**ITI, Higher Secondary, Diploma & B.Tech Students**

### Registration Fees

**Rs 200 /-**



## Course Highlights

**5-days tailored course focusing on "How Chat GPT Can Supercharge Your Study Sessions."**

- Your 24/7 Study Buddy: Get instant help anytime, anywhere!
- Personalized Learning Experience: Tailored explanations that fit your unique style!
- Quick Doubt Resolution: No more waiting—get answers on the spot!
- Resource Goldmine: Discover articles, videos, and practice problems in a flash!
- Smart Study Planner: Create effective schedules that balance work and breaks!

### Get in Touch

Mr. Krishanu Banerjee  
Email: [krishanubanerjee91@gmail.com](mailto:krishanubanerjee91@gmail.com)  
Mob: 8900311479  
**Registration Link:**



<https://forms.gle/hgpGsaRvFXxFDkXB7>

<https://icampus.setgoi.ac.in>



## Short Term

CERTIFICATE  
COURSE

**Boost Your Grades  
with AI:**

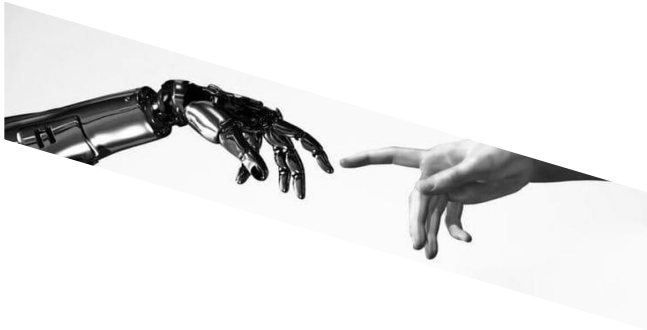
**HOW CHAT GPT  
CAN  
SUPERCHARGE  
YOUR STUDY  
SESSIONS**



**DEPARTMENT OF ELECTRICAL  
ENGINEERING**  
**Sanaka Educational Trust's Group of  
Institutions Malandighi, Durgapur-713212**

## **DAY 1 BASICS OF GENERATIVE AI**

Understand the foundational concepts of Generative AI, its applications, and its impact across industries. Participants will understand the core concepts and applications of generative AI, setting the foundation for hands-on practice in the next sessions.



## **DAY 2 HANDS-ON CASE STUDY USING GENERATIVE AI**

Gain practical experience by building and fine-tuning a generative model to solve a case study. Participants will be familiar with the dataset and have their environment ready for training the model.

## **DAY 3 HANDS-ON CASE STUDY USING GENERATIVE AI**

Monitoring performance and addressing overfitting or underfitting. Participants will train a functional generative AI model based on the case study.



## **DAY 4 HANDS-ON CASE STUDY USING GENERATIVE AI**

Participants will engage in fine-tuning hyperparameters, evaluating model performance, and analyzing results to identify areas for improvement. They will also test the model with new inputs. By the end of the session, participants will have a fully trained and fine-tuned model, ready for presentation and in-depth analysis.

## **DAY 5 QUIZ**

Test participants' knowledge and understanding of the concepts, hands-on skills, and case study implementation.

